

INSA

INSTITUT NATIONAL
DES SCIENCES
APPLIQUÉES
ROUEN NORMANDIE

Human scale,
global scope

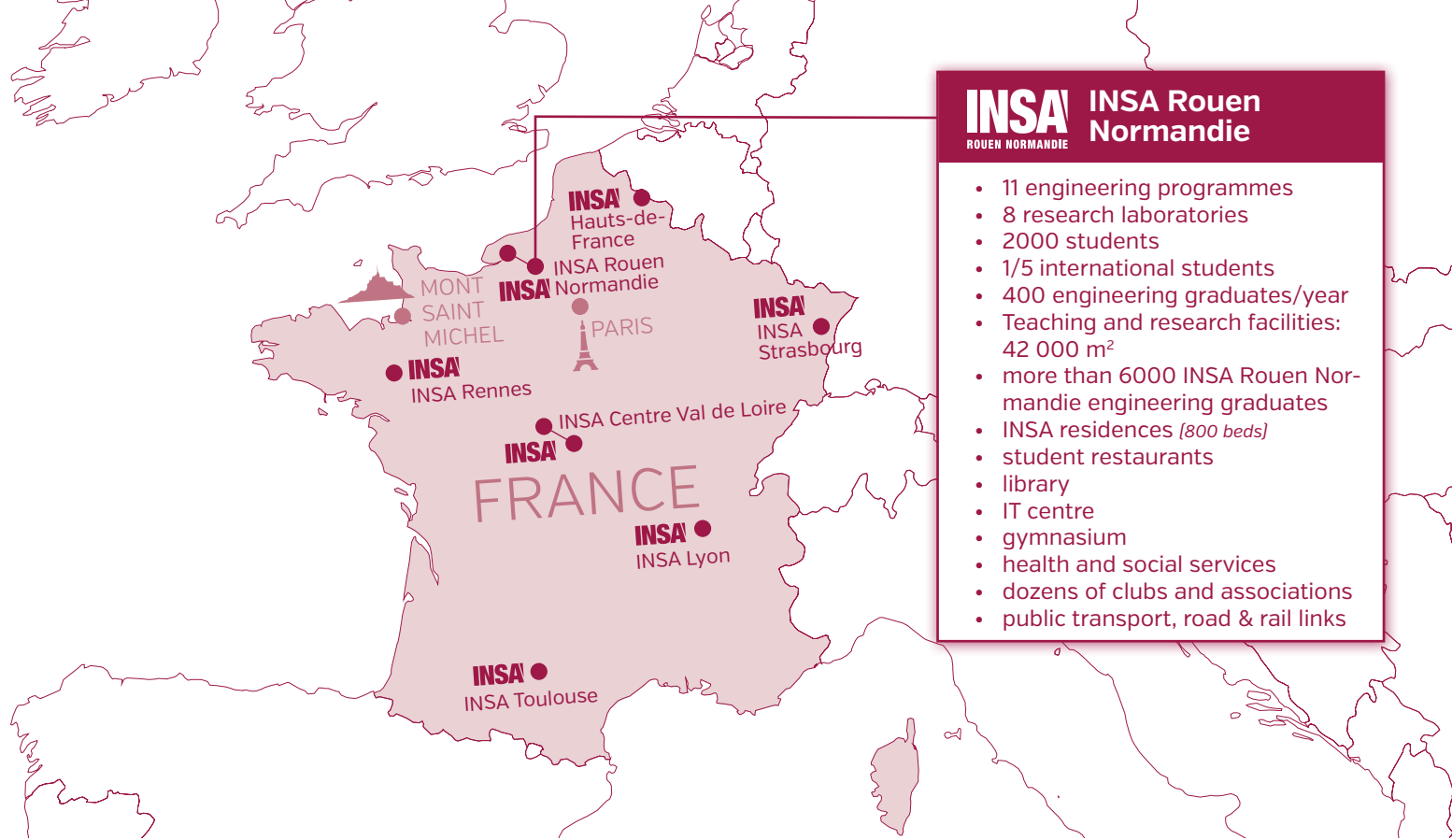


ENGLISH
VERSION

Engineering Studies in France at INSA ROUEN NORMANDIE

5-Year integrated Master's Degree programmes
Bilingual International Section (SIB)



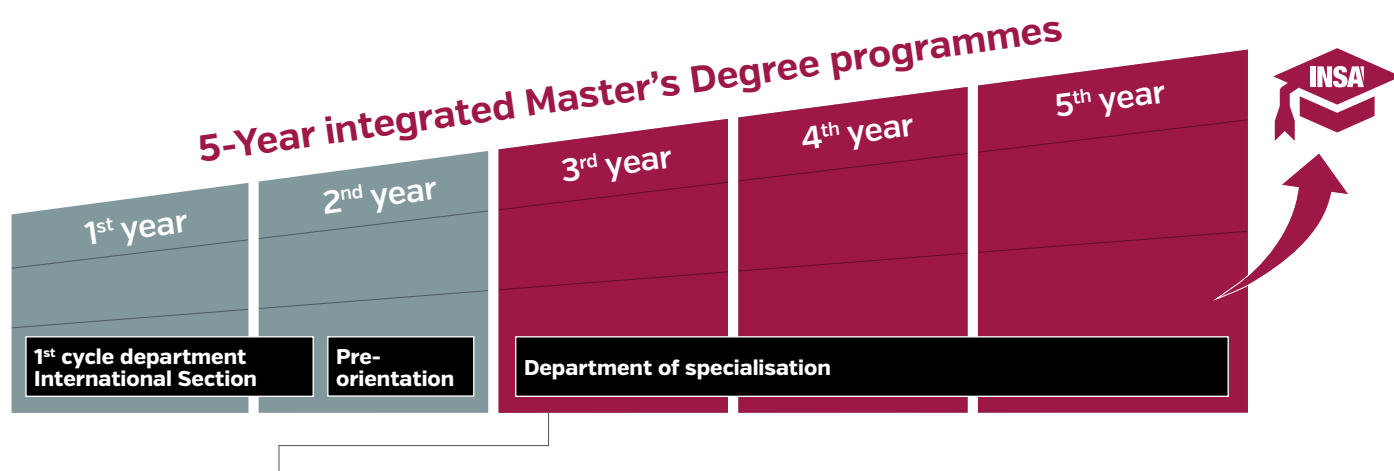


The INSA Group is France's leading group of public-funded engineering schools, with a long tradition of international recruitment of secondary school leavers in special sections designed to ensure their success. At INSA Rouen this section is called the Bilingual International Section (SIB). It runs over the first three semesters of the degree programmes.

What's your profile?

We recruit high-calibre students currently in their final year of study at a secondary school, specialising in Mathematics, Physics and Chemistry. Following a 3-week intensive French language Welcome Program, the teaching for the first 3 semesters at INSA is bilingual. It is therefore possible to apply

without any previous knowledge of French. Successful candidates must continue learning French in their home country immediately upon acceptance to reach at least an A2 level (CEFRL).



Choice of specialisations following the foundation cycle

- Computer science and information
- Mechanical Engineering
- Civil and Urban Engineering
- Chemistry & Chemical Engineering

- Mathematical & Software Engineering
- Energy Engineering
- Industrial Risk & Process Engineering

What does it cost?

Bilingual International Section charge	Summer Welcome Program for non-European students €4,750 + tuition fees for European students €750 + tuition fees Winter Welcome Program for non-European students €4,000 + tuition fees	i Payable once only. It covers : airport meet & greet, 3-week Welcome Program (<i>including lunches during the week + accommodation</i>), intensive French language classes (25hrs/wk) + Maths and Physics. Tutoring, mentoring, and help with all administrative formalities, etc. Specific pedagogical support for 4 semesters.
Tuition fees	for non-European students in 2 nd year €2,770 from the 3 rd to the 5 th year €3,770 For European students, year 2 nd to 5 th . Tuition fees for european economic aerea students	i To be paid each year.
Student Health Insurance	€215	i To be paid each year.
Complementary Health cover	€180	i Strongly recommended. To be paid each year.
Medical visit	€5,10	i Mandatory.
« Carte de séjour » Residence permit	Approx. €60	i Mandatory, annual renewal.
Civil liability & Home insurance	€60	i Mandatory. To be paid each year.
Board	€2000	i Estimate for 2 semesters. Subsidised meals at University Restaurant : 3.70 euros.
Lodging	from €3600	i For 12 months, depending on type of accommodation. Monthly rent: approx. 295 euros. n.b. a rent rebate (APL) of 600 to 1680 euros/year may be awarded to students over 18 once the Resident's Permit has been issued.
Rental security deposit	Approx. €305	i Mandatory on signing lease. To be reimbursed on departure, minus cost of any repairs etc.
Contribution to student and campus life (CVEC)	€92	i To be paid each year.

(prices indicated for 2021/2022 – subject to change)

How to fill out the SIB online application package?

➔ Open <http://candidat.groupe-insa.fr/>

⚠ N.B. For language proficiency, indicate at minimum either/or:

A1 in French and B1 in English

B1 in French and A1 in English

in order to access the application to SIB at INSA Rouen.

(We assume that by the time of your arrival in France for Welcome Program you will have reached an A2 level).

Upload documents

- Transcripts of your last two years of secondary education including current studies. As soon as your Spring/Summer transcripts are available, scan and email them to admiss@groupe-insa.fr and send hard copies by post . If you are already in higher education, upload also your university transcripts to date and provide Spring semester transcripts when available, as above.
- Two references from science teachers.
- Your official language test scores (*DELFL, TCF, FEF, TFI for French ; TOEFL, TOEIC, IELTS for English*) or a letter (*on letterhead stationery*) from your language teacher with contact details.
- If applicable, your official secondary school leaving certificate or university entrance examination results, with grades obtained.
- Proof of payment.

Deadlines

Applications for the upcoming academic year on <https://www.groupe-insa.fr/preparer> should be sent to admiss@groupe-insa.fr

 Hard copies are to be sent to our Admissions Office.

at Service Admission aux INSA
Campus LYON TECH,
9, Allée du Rhône
69628 VILLEURBANNE CEDEX FRANCE



INSA
ROUEN NORMANDIE

Campus du Madrillet
685 Avenue de l'Université - BP 08
76 801 Saint-Étienne-du-Rouvray cedex
FRANCE

Tel.: +33 2 32 95 97 00
insa@insa-rouen.fr
www.insa-rouen.fr



Some of our international partner companies

